



Camswitches



- 20 - 250A Switch Size
- Wide Range Of Standard Switch Schemes
- Custom Built Versions Available
- Choice Of Mounting Options
- Wide Range Of Handles And Legend Plates

CONTENTS

Camswitches

PR12 Standard Versions	22
Part Number Key & Selection Guide	24
Presentation, Handles & Accessories	25
Special Request Order Form	26
Mainswitches	27





PR12 STANDARD VERSIONS

- Modern flexible design
- 20A rated contacts
- Wide choice of switch presentation and mounting options
- Fingerproof terminals
- IP65 version also available
- UL and CSA approved
- Custom switches up to 24 contacts & 12 positions

TECHNICAL SPECIFICATION

Insulation Voltage (Ui)	VAC	660	Load Power (3 x 380V) AC23	kW	7.5
Thermal Current (Ith) AC20	A	20	Load Power (3 x 380V) AC3	kW	4
Operating Current (Ie) AC21	A	16	Max Rigid Wire Gauge	mm ²	4
Operating Temp	Deg C	-20 to +70	Mechanical Durability	x 10 ⁶	1.25
Protection Rating		IP40 (IP65 Upon Request)			

DRILL PLAN

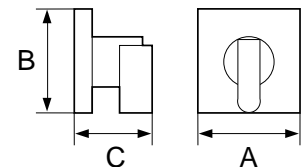
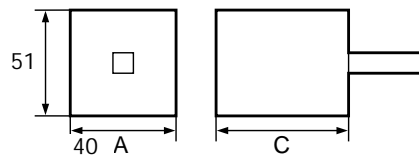
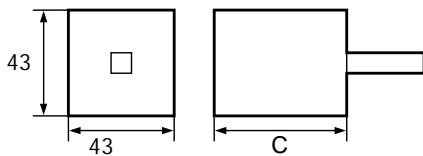


DIMENSIONS

Screw Mount Switch Body

Single Hole Mount Switch Body

Standard Plate Frame & Handle



A = 48
B = 48
C = 32

No of Contacts	C	No of Contacts	C	No of Contacts	C
1-2	36	13-14	122	1-2	51
3-4	46	15-16	132	3-4	61
5-6	56	17-18	142	5-6	71
7-8	66	19-20	152	7-8	81
9-10	76	21-22	162	9-10	91
11-12	86	23-24	172	11-12	101

CHOICE OF PRESENTATIONS & MOUNTING



- Screw Mount
- 48 x 48 Legend Plate & Frame
- Grey / Black Handle



- Single Hole Mount
- 48 x 48 Legend Plate & Frame
- Grey / Black Handle



- Single Hole Mount
- Selector Switch Style Handle
- To Order add C21RA03 to the end of the Screw Mount Part Number



- Single Hole Mount
- Key Switch Head
- To Order add C21RC00 to the end of the Screw Mount Part Number

PR12 STANDARD VERSIONS

Type	Diagram - Terminals	Legend	Screw Mount	Single Hole Mount
ON / OFF Switch			PR121101A8 PR121102A8 PR121103A8 PR121104A8	PR12X1101A8 PR12X1102A8 PR12X1103A8 PR12X1104A8
Change-over Switch with OFF			PR122201C8 PR122202C8 PR122203C8 PR122204C8	PR12X2201C8 PR12X2202C8 PR12X2203C8 PR12X2204C8
Change-over Switch without OFF			PR122251D4 PR122252D4 PR122253D4 PR122254D4	PR12X2251D4 PR12X2252D4 PR12X2253D4 PR12X2254D4
Instrument Switch 1 Ammeter, 1 Network, 3 Wires, 3 CT's with Common Point			PR128151A4	PR12X8151A4
Instrument Switch, 1 Ammeter, 1 Network, 3 Wires, 3 CT's without Common Point			PR128157A4	PR12X8157A4
Instrument Switch, 1 Voltmeter, 1 Network, 3 Wires			PR128351A4	PR12X8351A4
Instrument Switch, 1 Voltmeter, 1 Network, 3 Wires + Neutral			PR128357C8	PR12X8357C8
Motor Control Switch Forward / Reverse 1 Speed, 1 Coil			PR129151C8	PR12X9151C8

Please note that the switch types above are only a very small selection of the range available.
For any other switch scheme up to a maximum of 24 contacts please contact us.

CAM SWITCH PART NUMBER KEY

Switch Size - Current Rating

PR12 - 20A
PR17 - 25A
PR21 - 32A
PR26 - 40A
PR40 - 63A
PR63 - 80A
PR125 - 200A
PR160 - 250A

Switch Scheme Code

Example 1101 is a single pole
 On/Off switch

Switch Angle Code

Example A8 is 45 deg with the Off
 position at twelve o'clock

Handle Code

Example PN50 is a grey &
 black handle

Presentation Code

Example Q48 is 48 x 48mm
 legend plate & frame

Mounting Code

Example E is standard screw
 mount 30mm interval

HOW TO SELECT A CAMSWITCH

When selecting your cam switch requirement the following five criteria need to be considered and the details entered on to the 'Special request Order Form'

- (1) Switch Size - Current Rating
- (2) Switch Scheme & Switching Angle
- (3) Choice of Mounting
- (4) Choice of Presentation & Handle
- (5) Additional Accessories

(1) SWITCH SIZE CURRENT RATING

Electrical Characteristics		PR12	PR17	PR21	PR26	PR40	PR63	PR125	PR160
Insulation Voltage (Ui)	VAC	660	690	690	690	660	660	660	660
Thermal Current (Ith) AC20	A	20	25	32	40	63	80	200	250
Operating Current (Ie) AC21	A	16	20	25	32	50	80	160	200
Load Power (3 x 380V) AC23	kV	7.5	11	11	15	22	25	-	-
Load Power (3 x 380V) AC3	kV	4	7.5	7.5	11	18.5	22	-	-
Max Rigid Wire Gauge	mm ²	4	6	6	6	16	16	Dia 8mm Screws	

(2) SWITCH SCHEME & SWITCHING ANGLE

- The standard switch schemes & switching angles available are as detailed on the previous page
 - Other standard switch schemes are available please consult us for further details
- For custom design switch schemes up to 24 contacts & 12 positions please complete the details on the 'Special Request Order Form'

(3) CHOICE OF MOUNTING

Type	Code	PR12	PR17	PR21	PR26	PR40	PR63	PR125	PR160
Standard 2 Screw (30mm Interval)	E	✓	✓	✓	✓	-	-	-	-
Standard 2 Screw (50mm Interval)	E	-	-	-	-	✓	✓	✓	✓
Optional 2 Screw (35mm Interval)	EZ35	✓	-	-	-	-	-	-	-
Optional 4 Screw (36mm x 36mm)	EZ36	✓	✓	✓	✓	-	-	-	-
Optional 4 Screw (48mm x 48mm)	EZ48	✓	✓	✓	✓	-	-	-	-
Optional 4 Screw (68mm x 68mm)	EZ68	-	-	-	-	✓	✓	✓	✓
Dia 22mm Single Hole	-	Only on PR12 by fixing single hole presentation to standard E mount.							
Rear Mount (48mm x 48mm)	S	✓	✓	✓	✓	-	-	-	-
Rear Mount (68mm x 68mm)	S	-	-	-	-	✓	✓	✓	✓
Din Rail Mount	SX	✓	✓	✓	✓	-	-	-	-

(4) CHOICE OF SWITCH & HANDLE PRESENTATION

The following parts can be added to a standard screw (E) mount PR12 cam switch to convert it to a 22mm single hole mount version with the presentations detailed below.

• Single hole mount kit with 48 x 48 legend plate, frame & grey/black handle

N48MD50

Small Handle	Level Handle	Key Switch Head	Key Switch Head
C21RA03	C21RB03	C21RC00 (Key out as shown)	C21RF00 (Key out as shown)

Handles		Grey / Black	Red	Black
	Small Handle to Suit PR12 to PR26 (5mm Shaft)	PN50	PN51	PN53
	Medium Handle to Suit PR12 to PR26 (5mm Shaft)	MN50	MN51	MN53
	Medium Handle to Suit PR40 to PR160 (6mm Shaft)	MN60	MN61	MN63
	Large Handle to Suit PR12 to PR26 (5mm Shaft)	GN50	GN51	GN53
	Large Handle to Suit PR40 to PR160 (6mm Shaft)	GN60	GN61	GN63
	Small Lever to Suit PR12 - PR26 (5mm Shaft)	PC50	PC51	PC53
	Small Lever to Suit PR40 - PR160 (6mm Shaft)	PC60	PC61	PC63
	Large Lever to Suit PR40 - PR160 (6mm Shaft)	GC60	GC61	GC63

Legend Plates, Frames & Function Labels

	Blank Legend Plate (Can be custom engraved to your requirement)	Size	Silver
		48 x 48	WE40
		64 x 64	WE60
		72 x 72	WE70
	Legend Plate Frame	Size	Frame
		48 x 48	CQ48
		64 x 64	CQ64
		72 x 72	CQ72
		96 x 96	CQ96
	Blank Function Label (Can be custom engraved to your requirement)		IF9
	Function Label Frame	Size 48 x 48	Frame Q040

(5) ADDITIONAL ACCESSORIES

Please enquire for further details on any of the following:

- Clutch drive without door interlock
- Clutch drive with door interlock
- Reduced size enclosure for PR12
- Standard enclosure
- Parallel coupling of 2 switches
- Series coupling of 2 switches
- Pushbutton released device
- Key Locking device
- Terminal covers
- Rear mounted protection shrouds
- Spring return versions
- Troytech heavy duty handles

SPECIAL REQUEST ORDER FORM

Please photocopy this sheet and tick/complete each section to define your cam switch requirement.

Name Telephone.....

Company Fax

Switch Size				Switch Mounting			
PR12 - 20A	<input type="checkbox"/>	PR40 - 63A	<input type="checkbox"/>	Standard 2 Screw Mount (E)	<input type="checkbox"/>		
PR17 - 25A	<input type="checkbox"/>	PR63 - 80A	<input type="checkbox"/>	Optional 4 Screw Mount (EZ)	<input type="checkbox"/>		
PR21 - 32A	<input type="checkbox"/>	PR125 - 200A	<input type="checkbox"/>	Single Hole Mount	<input type="checkbox"/>		
PR26 - 40A	<input type="checkbox"/>	PR160 - 250A	<input type="checkbox"/>	Din Rail Mount (SX)	<input type="checkbox"/>		
				Other:-	<input type="checkbox"/>		

Contact Options mark in grid as required

- | | |
|---|--|
| <p><input checked="" type="checkbox"/> Closed contact.</p> <p><input checked="" type="checkbox"/> Closed contact, cut off between 2 positons.</p> <p><input checked="" type="checkbox"/> Closed contact, 2 positions without cut-off.</p> | <p> Overlapping: second contact closes before first contact opens.</p> <p> Impulse contact. Closes momentarily when switching from one position to next.</p> |
|---|--|

Requested text Fill in text left to right													Example of links (recommended to be on same wafer or from one to next.)		Switch Presentation		
Contact Number	1	2	3	4	5	6	7	8	9	10	11	12	Positions		Mark any required links below as recommended above		Function Label
1-2															<div style="border: 1px solid black; border-radius: 10px; width: 100px; height: 30px; margin: 0 auto;"></div>		
3-4													<input type="checkbox"/> 1 <input type="checkbox"/> 3 <input type="checkbox"/> 2 <input type="checkbox"/> 4	Mark text above as required			
5-6													<input type="checkbox"/> 5 <input type="checkbox"/> 7 <input type="checkbox"/> 6 <input type="checkbox"/> 8	Legend Plate			
7-8													<input type="checkbox"/> 9 <input type="checkbox"/> 11 <input type="checkbox"/> 10 <input type="checkbox"/> 12	Mark text in position as required below			
9-10													<input type="checkbox"/> 13 <input type="checkbox"/> 15 <input type="checkbox"/> 14 <input type="checkbox"/> 16	<div style="border: 1px solid black; width: 100px; height: 100px; margin: 0 auto; display: flex; align-items: center; justify-content: center;"> <div style="border: 1px solid black; border-radius: 50%; width: 60px; height: 60px;"></div> </div>			
11-12													<input type="checkbox"/> 17 <input type="checkbox"/> 19 <input type="checkbox"/> 18 <input type="checkbox"/> 20	Size: 48x48 <input type="checkbox"/> 64x64 <input type="checkbox"/> 72x72 <input type="checkbox"/> 96x96 <input type="checkbox"/>			
13-14													<input type="checkbox"/> 21 <input type="checkbox"/> 23 <input type="checkbox"/> 22 <input type="checkbox"/> 24				
15-16													<input type="checkbox"/> 25 <input type="checkbox"/> 27 <input type="checkbox"/> 26 <input type="checkbox"/> 28				
17-18													<input type="checkbox"/> 29 <input type="checkbox"/> 31 <input type="checkbox"/> 30 <input type="checkbox"/> 32				
19-20													<input type="checkbox"/> 33 <input type="checkbox"/> 35 <input type="checkbox"/> 34 <input type="checkbox"/> 36				
21-22													<input type="checkbox"/> 37 <input type="checkbox"/> 39 <input type="checkbox"/> 38 <input type="checkbox"/> 40				
23-24													<input type="checkbox"/> 41 <input type="checkbox"/> 43 <input type="checkbox"/> 22 <input type="checkbox"/> 44				
25-26													<input type="checkbox"/> 45 <input type="checkbox"/> 47 <input type="checkbox"/> 46 <input type="checkbox"/> 48				
27-28													Additional Information				
29-30													Switch Ref				
31-32																	
33-34																	
35-36																	
37-38																	
39-40																	
41-42																	
43-44																	
45-46																	
47-48																	

Switching angle

Mark angle required below and number the positions to be used.

- | | | | | | |
|--------------------------|--------------------------|--------------------------|--------------------------|--------------------------|--------------------------|
| | | | | | |
| 90° | 90° | 60° | 60° | 45° | 30° |
| <input type="checkbox"/> | <input type="checkbox"/> | <input type="checkbox"/> | <input type="checkbox"/> | <input type="checkbox"/> | <input type="checkbox"/> |



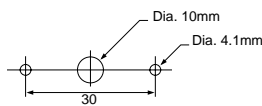
MAINSWITCHES

- 3 Pole Isolator Switches
- Padlockable Handles
- UL and CSA approved
- Enclosure and Clutch Drive versions available upon request
- IP65 version also available

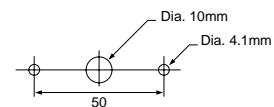
TECHNICAL SPECIFICATION

	NS3EB	SS3EB	TS3EB	ZS3EB	HS3EC	IS3EC
Insulation Voltage (Ui) VAC	690	690	690	690	690	690
Thermal Current (Ith) A	20	25	32	40	63	80
Operating Current (AC21) A	16	20	25	32	50	80
Load Power (AC23) kW	7.5	11	11	15	22	25
Load Power (AC3) kW	4	7.5	7.5	11	18.5	22
Max Rigid Wire Gauge mm ²	4	6	6	6	16	16
Mechanical Durability x 10 ⁶	1.25					
Operating Temp Deg C	-20 to +70					
Protection Rating	IP40 (IP65 Upon Request)					

DRILL PLAN

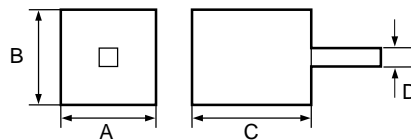


*Size 1 - 3



*Size 4

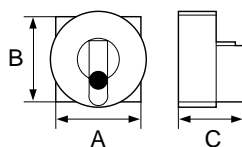
SWITCH BODY



*Size	A	B	C	D
1	40	42	46	5
2	50	48	45	5
3	53	60	52	5
4	80	80	82	6

Switch Body 3 Pole 20A *Size1	NS3EB
Switch Body 3 Pole 25A *Size2	SS3EB
Switch Body 3 Pole 32A *Size2	TS3EB
Switch Body 3 Pole 40A *Size3	ZS3EB
Switch Body 3 Pole 63A *Size4	HS3EC
Switch Body 3 Pole 80A *Size4	IS3EC

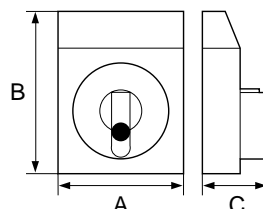
PADLOCKABLE HANDLE



A	B	C
48	48	37
72	72	37

Yellow / Red 48x48mm (5mm shaft)	J48PN51
Yellow / Red 72x72mm (5mm shaft)	J72MN51
Yellow / Red 72x72mm (6mm shaft)	J72MN61
Grey / Black 48x48mm (5mm shaft)	V48PN50
Grey / Black 72x72mm (5mm shaft)	V72MN50
Grey / Black 72x72mm (6mm shaft)	V72MN60

PADLOCKABLE HANDLE WITH TEXT "MAINSWITCH"



A	B	C
65	82	37
80	100	37

Yellow / Red 48x48mm (5mm shaft)	J483PN51
Yellow / Red 72x72mm (5mm shaft)	J723MN51
Yellow / Red 72x72mm (6mm shaft)	J723MN61
Grey / Black 48x48mm (5mm shaft)	V483PN50
Grey / Black 72x72mm (5mm shaft)	V723MN50
Grey / Black 72x72mm (6mm shaft)	V723MN60

Tel 0131 448 2828 Fax 0131 448 2880
e-mail: sales@lpc-uk.com



The Panel Products Catalogue



2001
PRICE
LISTS

1. Control & Signalling
2. Camswitches
3. Switch Disconnectors
4. Residual Current Circuit Breakers
5. Relays
6. Timers
7. Control Relays
8. Counters
9. Solid State Relays
10. Solid State Interface Relays
11. Signal Towers, Beacons & Sounders
12. Footswitches

A u t o m a t i o n & C o n t r o l
S p e c i a l i s t s

and a whole lot more!

BACO CAM SWITCH 2001

ITEM NO.	DESCRIPTION	SALE PRICE 01
175561	BACO 22MM PLASTIC FIXING NUT	£0.08
175703	SHAFT 12+ CONTACTS PR12	£1.69
BC12Q3	PR17 ENCLOSURE 3-6 CONTACTS	£10.55
CM14P	PG16 CABLE GLAND FOR BC05Q3	£0.94
CQ48	FRAME FOR 48X48 LEGEND PLATE	£0.44
CQ48A	FRAME FOR 48X48 LEGEND DIA22mm	£0.85
CQ64	FRAME FOR 64X64 LEGEND PLATE	£0.48
CQ72	FRAME FOR 72X72 LEGEND PLATE	£0.69
HS3EC	MAINSWITCH 63A 3 POLE	£30.63
IP55	IP55 GASKET FOR CAMSWITCH	£0.20
IP65	IP65 GASKET FOR CAMSWITCH	£1.02
IS3EC	MAINSWITCH 80A 3 POLE	£34.44
J483PN51	PLATE+HAND YEL/RED"MAINSWITCH"	£2.89
J48PN51	PLATE+HAND YEL/RED NO TEXT	£2.66
J723MN61	PLATE+HAND YEL/RED"MAINSWITCH"	£6.85
J72MN61	PLATE+HAND YEL/RED NO TEXT	£6.52
MN50	MEDIUM GREY KNOB	£0.89
MN51	MEDIUM RED KNOB	£0.89
MN53	MEDIUM BLACK KNOB	£0.89
N48MD50	PR12 SINGLE HOLE PRESENTATION	£2.72
NS3BV48	PR12 MAINSWITCH ENCLOSURE 1	£16.38
NS3EB	MAINSWITCH 20A 3 POLE	£7.84
NS3RV49	PR12 MAINSWITCH REAR CLUTCH	£15.38
NS3XV48	PR12 MAINSWITCH ENCLOSURE 2	£21.36
PC50	CAMSWITCH HANDLE PISTOL GRIP	£1.18
PN50	SMALL GREY KNOB	£0.62
PN51	SMALL RED KNOB	£0.62
PN53	SMALL BLACK KNOB	£0.62
PR121101A4	CAMSWITCH 20A 1 POLE "0-1"	£6.94
PR121101A8	CAMSWITCH 20A 1 POLE "0-1"	£6.94
PR121101AR10	CAMSWITCH 20A 1POLE "0-1" SR	£6.94
PR121101D4	CAMSWITCH 20A 1 POLE "0-1"	£6.94
PR121101D4OH	CAMSWITCH 20A 1 POLE"OFF-HAND"	£6.94
PR121101D4OO	CAMSWITCH 20A 1 POLE "OFF ON"	£6.94
PR121102A8	CAMSWITCH 20A 2 POLE "0-1"	£8.18
PR121103A4	CAMSWITCH 20A 3 POLE "0-1"	£9.29
PR121103A8	CAMSWITCH 20A 3 POLE "0-1"	£9.29
PR121103D4	CAMSWITCH 20A 3 POLE "0-1"	£9.29
PR121104A4	CAMSWITCH 20A 4 POLE "0-1"	£10.45
PR121104A8	CAMSWITCH 20A 4 POLE "0-1"	£10.45
PR122201C4	CAMSWITCH 20A 1 POLE "1-0-2"	£8.18
PR122201C8	CAMSWITCH 20A 1 POLE "1-0-2"	£8.18
PR122201C8HOA	CAMSWITCH 20A 1 POLE "H-0-A"	£8.18
PR122201C8HOA	CAMSWITCH 20A 1 POLE "H-O-A"	£8.18
PR122201CR12	CAMSWITCH 20A 1POLE "1-0-2" SR	£8.18
PR122202C8	CAMSWITCH 20A 2 POLE "1-0-2"	£10.45
PR122202C8HOA	CAMSWITCH 20A 2 POLE "H OFF A"	£10.45
PR122202CR12	CAMSWITCH 20A 2POLE "1-0-2" SR	£10.45
PR122203C4	CAMSWITCH 20A 3 POLE "1-0-2"	£13.13
PR122203C8	CAMSWITCH 20A 3 POLE "1-0-2"	£13.13
PR122204C8	CAMSWITCH 20A 4 POLE "1-0-2"	£15.60
PR122204C8HOA	CAMSWITCH 20A 4 POLE "H-O-A"	£15.60

PR122208C8	CAMSWITCH 20A 1 POLE "1-0-2"16c	£28.41
PR122251A4	CAMSWITCH 20A 1 POLE "1-2"	£8.18
PR122251D4	CAMSWITCH 20A 1 POLE "1-2"	£8.18
PR122252D4	CAMSWITCH 20A 2 POLE "1-2"	£10.45
PR122252D4HA	CAMSWITCH 20A 2 POLE "H-A"	£13.13
PR122253D4	CAMSWITCH 20A 3 POLE "1-2"	£13.13
PR122254D4	CAMSWITCH 20A 4 POLE "1-2"	£15.60
PR122301A4	CAMSWITCH 20A 1 POLE "0-1-2-3"	£9.34
PR122301A8	CAMSWITCH 20A 1 POLE "0-1-2-3"	£9.34
PR122351A8	CAMSWITCH 20A 1 POLE "1-2-3"	£9.34
PR122351B4	CAMSWITCH 20A "1-2-3"	£9.29
PR122351C8	CAMSWITCH 20A 1 POLE "1-2-3"	£9.29
PR122353B4	CAMSWITCH 20A 3 POLE 3 WAY	£21.96
PR122401A8	CAMSWITCH 20A 1POLE"0-1-2-3-4"	£10.48
PR122451A4	CAMSWITCH 20A 1 POLE "1-2-3-4"	£10.45
PR122451A8	CAMSWITCH 20A 1 POLE "1-2-3-4"	£10.45
PR1251103A8	CAM SWITCH 125A 3 POLE "0-1"	£71.15
PR128151A4	CAMSWITCH AMMETER 3CT + COMMON	£13.13
PR128151A4RYB	CAMSWITCH AMMETER 3CT + COMMON	£13.13
PR128157A4	CAMSWITCH AMMETER 3CT	£18.38
PR128351A4	CAMSWITCH VOLTMETER 3PH	£10.45
PR128357C8	CAMSWITCH VOLTMETER 3PH + N	£13.13
PR128357C8RYB	CAMSWITCH VOLTMETER 3PH + N	£13.13
PR129151C8	CAM SWITCH MOTOR REV OFF FWD	£12.51
PR12RSPEC10	CAM SWITCH SPECIAL 10 CONTACT	£28.42
PR12SPEC01	CAM SWITCH SPECIAL 1 CONTACT	£8.00
PR12SPEC02	CAM SWITCH SPECIAL 2 CONTACT	£9.51
PR12SPEC03	CAM SWITCH SPECIAL 3 CONTACT	£10.84
PR12SPEC04	CAM SWITCH SPECIAL 4 CONTACT	£12.16
PR12SPEC05	CAM SWITCH SPECIAL 5 CONTACT	£14.51
PR12SPEC06	CAM SWITCH SPECIAL 6 CONTACT	£15.36
PR12SPEC07	CAM SWITCH SPECIAL 7 CONTACT	£17.37
PR12SPEC08	CAM SWITCH SPECIAL 8 CONTACT	£18.30
PR12SPEC09	CAM SWITCH SPECIAL 9 CONTACT	£21.65
PR12SPEC10	CAM SWITCH SPECIAL 10 CONTACT	£22.61
PR12SPEC11	CAM SWITCH SPECIAL 11 CONTACT	£24.54
PR12SPEC12	CAM SWITCH SPECIAL 12 CONTACT	£25.47
PR12SPEC14	CAM SWITCH SPECIAL 14 CONTACT	£30.45
PR12SPEC15	CAM SWITCH SPECIAL 15 CONTACT	£31.95
PR12SPEC16	CAM SWITCH SPECIAL 16 CONTACT	£32.96
PR12SPEC20	CAM SWITCH SPECIAL 20 CONTACT	£37.97
PR12SPEC24	CAM SWITCH SPECIAL 24 CONTACT	£45.16
PR12SPEC25	CAM SWITCH SPECIAL 25 CONTACT	£47.40
PR12X1101A8	CAMSWITCH 20A 1 POLE "0-1"	£8.39
PR12X1102A8	CAMSWITCH 20A 2 POLE "0-1"	£9.70
PR12X1103A8	CAMSWITCH 20A 3 POLE "0-1"	£10.84
PR12X1104A8	CAMSWITCH 20A 4 POLE "0-1"	£11.98
PR12X2201C8	CAMSWITCH 20A 1 POLE "1-0-2"	£9.70
PR12X2202C8	CAMSWITCH 20A 2 POLE "1-0-2"	£11.98
PR12X2203C8	CAMSWITCH 20A 3 POLE "1-0-2"	£14.74
PR12X2204C8	CAMSWITCH 20A 4 POLE "1-0-2"	£17.27
PR12X2251D4	CAMSWITCH 20A 1 POLE "1-2"	£9.70
PR12X2252D4	CAMSWITCH 20A 2 POLE "1-2"	£11.98
PR12X2253D4	CAMSWITCH 20A 3 POLE "1-2"	£14.74
PR12X2254D4	CAMSWITCH 20A 4 POLE "1-2"	£17.27
PR12X2301A8	CAMSWITCH 20A 1 POLE "0-1-2-3"	£10.84

PR12X2351A8	CAMSWITCH 20A 1 POLE "1-2-3"	£10.84
PR12X8151A4	CAMSWITCH AMMETER 3CT + COMMON	£14.74
PR12X8157A4	CAMSWITCH AMMETER 3CT	£20.16
PR12X8351A4	CAMSWITCH VOLTMETER 3PH	£11.98
PR12X8357C8	CAMSWITCH VOLTMETER 3PH + N	£14.74
PR12XSPEC01	CAM SWITCH SPECIAL 1 CONTACT	£9.74
PR12XSPEC02	CAM SWITCH SPECIAL 2 CONTACT	£11.25
PR12XSPEC03	CAM SWITCH SPECIAL 3 CONTACT	£12.58
PR12XSPEC04	CAM SWITCH SPECIAL 4 CONTACT	£13.90
PR12XSPEC05	CAM SWITCH SPECIAL 5 CONTACT	£16.25
PR12XSPEC06	CAM SWITCH SPECIAL 6 CONTACT	£17.10
PR12XSPEC07	CAM SWITCH SPECIAL 7 CONTACT	£19.11
PR12XSPEC08	CAM SWITCH SPECIAL 8 CONTACT	£20.04
PR12XSPEC09	CAM SWITCH SPECIAL 9 CONTACT	£23.39
PR12XSPEC10	CAM SWITCH SPECIAL 10 CONTACT	£24.35
PR12XSPEC11	CAM SWITCH SPECIAL 11 CONTACT	£26.28
PR12XSPEC12	CAM SWITCH SPECIAL 12 CONTACT	£27.21
PR171101A8	CAMSWITCH 25A 1 POLE "0-1"	£7.50
PR171102A8	CAMSWITCH 25A 2 POLE "0-1"	£8.83
PR171103A8	CAMSWITCH 25A 3 POLE "0-1"	£10.59
PR171104A6V72MN	CAM SWITCH	£19.32
PR172201C8	CAMSWITCH 25A 1 POLE "1-0-2"	£8.83
PR172202C8	CAMSWITCH 25A 2 POLE "1-0-2"	£11.81
PR172251D4	CAMSWITCH 25A 1 POLE "1-2"	£8.83
PR172252D4	CAMSWITCH 25A 2 POLE "1-2"	£11.81
PR1766528REMN50	CAMSWITCH	£20.21
PR1766530EMN50	CAMSWITCH	£15.56
PR17SPEC.8KONT	CUSTOM CAM SWITCH PR17 8 CONT	£35.51
PR17SPEC04	CUSTOM CAM SWITCH PR17 4 CONT	£14.49
PR211101A8	CAMSWITCH 32A 1 POLE "0-1"	£8.27
PR211102A8	CAMSWITCH 32A 2 POLE "0-1"	£9.75
PR211103A8	CAMSWITCH 32A 3 POLE "0-1"	£11.77
PR212201C8	CAMSWITCH 32A 1 POLE "1-0-2"	£9.75
PR212202C8	CAMSWITCH 32A 2 POLE "1-0-2"	£13.09
PR212202CR12	CAMSWITCH 32A 2 POLE "1-2" SR	£16.77
PR212251D4	CAMSWITCH 32A 1 POLE "1-2"	£9.75
PR212252D4	CAMSWITCH 32A 2 POLE "1-2"	£13.09
PR212254A4	CAMSWITCH 32A 4 POLE "1-2"	£21.09
PR212254A4E30C	CAMSWITCH 32A 4 POLE "1-2" KEY	£37.87
PR212254D4	CAMSWITCH 32A 4 POLE "1-2"	£21.09
PR261101A8	CAMSWITCH 40A 1 POLE "0-1"	£10.35
PR261102A8	CAMSWITCH 40A 2 POLE "0-1"	£12.68
PR261103A4	CAMSWITCH 40A 3 POLE "0-1"	£15.78
PR261103A8	CAMSWITCH 40A 3 POLE "0-1"	£15.78
PR262201C8	CAMSWITCH 40A 1 POLE "1-0-2"	£12.68
PR262202C8	CAMSWITCH 40A 2 POLE "1-0-2"	£17.82
PR262251D4	CAMSWITCH 40A 1 POLE "1-2"	£12.68
PR262252D4	CAMSWITCH 40A 2 POLE "1-2"	£17.82
PR26SPEC02	CAM SWITCH SPECIAL 2 CONTACT	£15.85
PR26SPEC03	CAM SWITCH SPECIAL 3 CONTACT	£18.42
PR631104A4V72MN	CAM SWITCH	£37.95
Q040	FUNCTION LABEL FRAME	£0.30
Q64	PLATE & FRAME 64X64MM	£0.79
Q64MNAP	CAM SWITCH PARALLEL COUPLING	£47.52
Q64MNC	CAM SWITCH KEY LOCK PLATE	£19.90
Q64MNCA	CAM SWITCH KEY LOCK ASSY 1424A	£19.90

Q72	PLATE & FRAME 72X72MM	£1.29
SS3EB	MAINSWITCH 25A 3 POLE	£11.02
TS3EB	MAINSWITCH 32A 3 POLE	£12.48
V483PN	PLATE+HAND GRY/BLK"MAINSWITCH"	£2.89
V48PN	PLATE+HAND GRY/BLK NO TEXT	£2.66
V72MN50	PLATE+HAND GRY/BLK HANDLE	£5.53
WE40	ALUMINIUM 48X48 BLANK PLATE	£0.38
WE40-01A1	TEXTPLATE 30 DEG "0-1"	£0.54
WE40-01A4	TEXTPLATE 90 DEG "0-1"	£0.54
WE40-102C1	TEXTPLATE 30 DEG "1-0-2"	£0.54
WE40-102C4	TEXTPLATE 90 DEG "1-0-2"	£0.54
WE40-ENGRAVED	48X48 PLATE CUSTOM ENGRAVED	£0.86
WE40-OOA4	TEXTPLATE 90 DEG "OFF-ON"	£0.54
WE41	RED 48X48 BLANK PLATE	£0.66
WE43	BLACK 48X48 BLANK PLATE	£0.66
WE45	YELLOW 48X48 BLANK PLATE	£0.66
WE60	ALUMINIUM 64X64 BLANK PLATE	£0.32
WE60-ENGRAVED	64X64 PLATE CUSTOM ENGRAVED	£1.01
WE70	ALUMINIUM 72X72 BLANK PLATE	£0.60
WR02	SHAFT EXTENSION FOR NS3RV49	£1.24
ZS3EB	MAINSWITCH 40A 3 POLE	£16.36