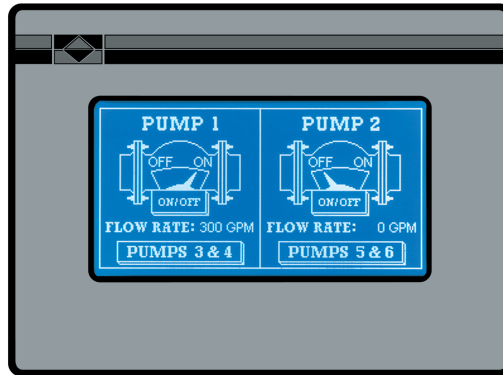


## MODEL GL300T - PARADIGM MONOCHROME TOUCHSCREEN O.I.



- 256 X 128 PIXEL CCFL LIQUID CRYSTAL DISPLAY
- 500 ALARM POINT LOGGER
- COMPREHENSIVE REPORT GENERATION
- POWERFUL RECIPE HANDLING
- UNLIMITED PASSWORD PROTECTION
- REAL TIME CLOCK BATTERY BACKED
- EXPRESSION EVALUATION
- 32-BIT/FLOATING POINT MATHS
- DIRECT NETWORK (Including Multiple Protocol) OR MODEM LINK TO PLC
- INDUSTRIAL TOUCHSCREEN

Click Icon For User Bulletin



FAX/WEB  
DOC# 07021

### Product Features

Model GL300T Operator Terminal combines unique capabilities normally expected only from expensive SCADA packages, with dramatic ease of use. The GL300T is configured using the same powerful EDICT97 Software as all Red Lion Paradigm Operator Interfaces. The result is savings in time to get challenging applications up and running, and frequent savings in hardware costs due to replacing many functions usually performed in separate expensive devices.

#### POWERFUL DATA MANIPULATION

Model GL300 can perform 32-bit math functions. Values can be scaled, averaged, and signal linearization can be performed on inputs from non-linear sensors.

Math expression evaluation can be used in any context throughout the Panel Configuration software, and the Alarm Scanner can trigger outputs to display, or pass derived outputs back to external serial devices.

User Programs can be run utilizing 'C'-type language syntax for an infinite number of applications.

#### MEMORY

A large amount of data can be stored in memory. Event logs can maintain date and time-stamped records of plant activity, as well as complete alarm histories.

Large numbers of complex recipes can be stored in the panel much more economically than within a PLC.

#### COMMUNICATIONS

As well as a clear, easily read display, permanent records can

be sent to an attached printer, using the full-page report generator facility on board.

Model GL300T can be connected to a wide variety of serial devices. It can communicate simultaneously with a PLC on one port and Red Lion intelligent devices on a second port. Paradigm database structure uses Named Data, rather than Tag Names to enable changes of connected PLC type without the common need, with competitor's products, to re-write the application.

Unlimited Password protection facilities allows user access to be precisely controlled.

Modem support enables systems to communicate with the world through the Operator Interface.

A unique database feature makes it simple to provide user-selectable language options for all display pages.

Interface Program downloads are fast. When developing applications, only changes are downloaded saving valuable time.

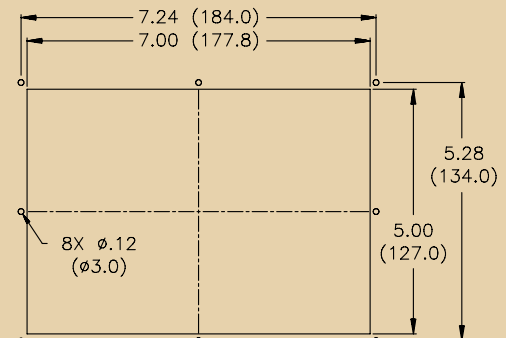
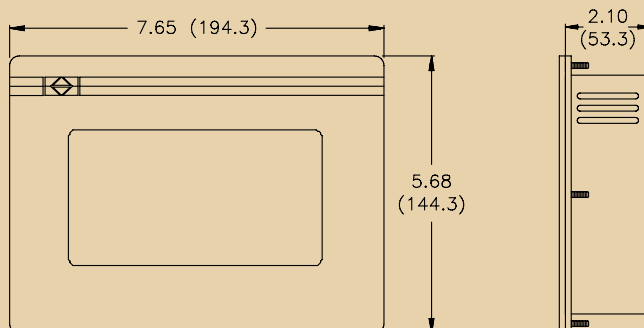
#### DISPLAY

The high quality graphical display supports object-oriented graphics, and bit-maps, thereby enabling mimics of plant functions. A resistive touch screen layer with 200 x 200 touch cells provides an intuitive interface with animated graphic objects on the screen.

#### CONSTRUCTION

GL300T is robustly constructed for an industrial environment. With a metal enclosure with a non-corroding NEMA 4/IP65 front panel.

#### DIMENSIONS "In inches (mm)"



### MODEL GL300T - PARADIGM MONOCHROME TOUCHSCREEN O.I.

#### General Specifications

- 1. POWER REQUIREMENTS:** 11 min. to 30 max. VDC @ 5.25 W  
**Power Up Current:** 2.5 A for 1 msec max.  
Must use a Class 2 or SELV rated power supply.
- 2. DISPLAY:** 256 x 128 pixel full graphic display with cold cathode backlight. Automatic temperature compensation. Text formats up to 16 x 40 characters.
- 3. MEMORY:** 256K (129K user) battery backed RAM (Battery life expectancy 3 years 50/50 on/off cycle). Optional expansion to 768K (704K user).
- 4. TOUCHSCREEN:** Continuous resistive touch screen interface specified for up to 5 million operations. 200 X 200 touch cells
- 5. ENVIRONMENTAL CONDITIONS:**  
**Operating Temperature:** 0 to 40°C  
**Storage Temperature:** -20 to 80°C  
**Operating and Storage Humidity:** 20 to 80% max. RH (non-condensing) from 0°C to 40°C.  
**Altitude:** Up to 2000 meters
- 6. CERTIFICATIONS AND COMPLIANCES:**  
**SAFETY**  
EN 61010-1, IEC 1010-1  
**ELECTROMAGNETIC COMPATIBILITY**  
Immunity to EN 50082-2  
Emissions to EN 50081-2
- 7. PHYSICAL DIMENSIONS:** L = 7.65" (194.3 mm), H = 5.68" (144.3 mm), D = 2.10" (53.3 mm).
- 8. CONSTRUCTION:** Metal enclosure with NEMA 4/IP65 front plate when correctly fitted with the gasket provided. This unit is rated for NEMA 4/IP65 indoor use. Installation Category I, Pollution Degree 2
- 9. FIELD CONNECTIONS:** Removable screw terminal blocks.
- 10. WEIGHT:** 2.32 lb. (1.05 Kg.)

#### Input/Output Communications

- 1. SERIAL PORTS:** Data Format and Baud Rates for each port is individually software programmable up to 19200 baud.  
**Port 1:** Programming Port - RS-232 on an RJ-11 jack.  
**Port 2:** RS-232 Port on a Plug-In Screw Terminal Block  
**Port 3:** RS-485 Port on a Plug-In Screw Terminal Block  
(Up to 20 units can be connected and individually addressed.)  
  
*Note: LED Indicators show communications status on Ports 2 & 3*
- 2. COMMUNICATION MODES:** Any of the three ports can be used to communicate with Serial Devices.  
Model - GL300 may communicate in Master mode with a different device protocol on each port (*See Note*)  
Ports 2 and 3 may be configured as different device protocols in Master mode and Port 1 may be used simultaneously in Slave mode for a third device protocol.  
However, only one of Ports 2 and 3) may be configured, if either is selected as a Slave protocol.  
  
*Note: Except if Allen Bradley DH485 is selected on either Port 2 or 3, in which case only Port 1 will be available for a separate Device Protocol.*

#### Ordering Information

MODEL NO.	DESCRIPTION	PART NUMBER
GL300T	256 X 128 CCFL, w/touchscreen, 256 K memory	GL300T00
	256 X 128 CCFL, w/touchscreen, 768 K memory expansion	GL300T10